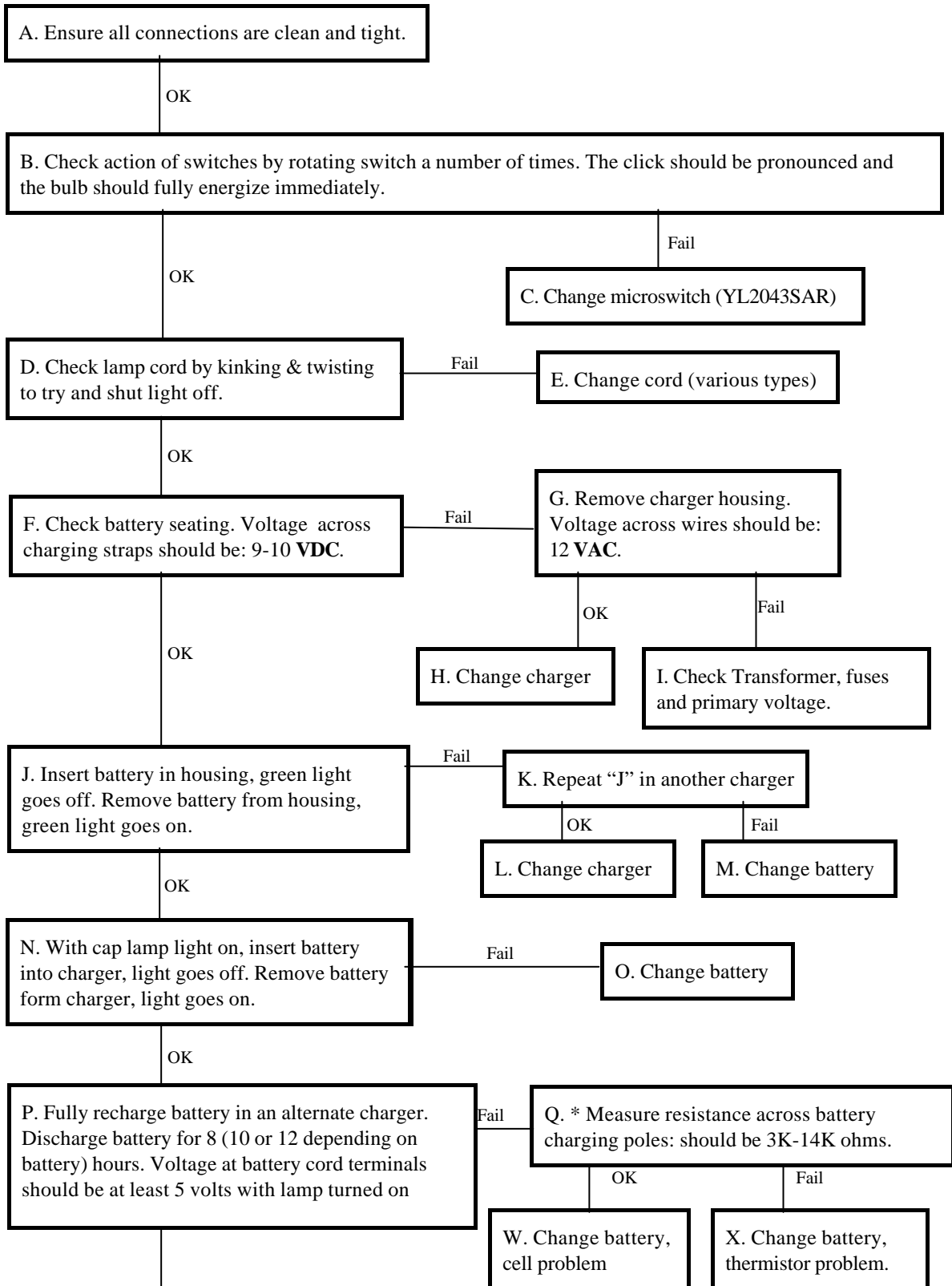


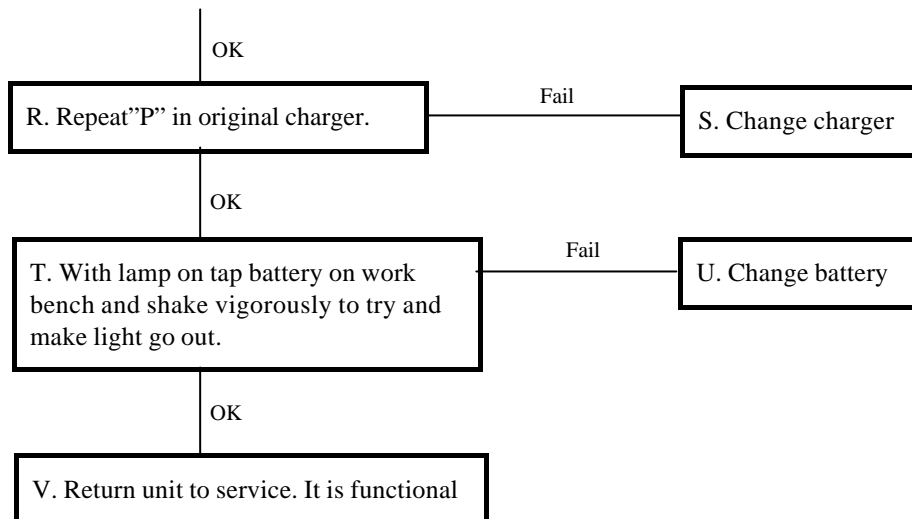


**EWS & CO. A.S.**

PO Box 23  
N-1332 Oesteraas, Norway  
Phone: int + 47 67 14 86 40  
Fax: int + 47 67 14 88 44

Procedure for Troubleshooting of:  
NORTHERN LIGHT CAP LAMP YL2000[GO]/2150[GO]/2012[GO]/2500[GO]/2550[GO]/2600[GO]





\* Under Test Q: For YL2012/2600 cap lamps the resistance should be: 30K-60K ohm.

All other values are the same on all lamps: YL2000/2150/2012/2500/2550/2600.

**NB:** The battery, cord, switch block and charger are all warranted to be free of defects for 12 months of service. After 12 months of service, components can be purchased to repair assemblies such as: switch blocks. If the battery is less than 2 years old and has been replaced as per test M, O, U, X, it can be repaired at the factory in Canada for cost.

8/10 hour batteries charge in the black charger:	YL5020A
12 hour batteries charge in the grey charger:	YL5020AE

**IT IS EXTREMELY IMPORTANT THAT YOU DO NOT ATTEMPT TO CHARGE A 8/10 HOUR BATTERY IN A 12 HOUR CHARGER (GREY), OR ATTEMPT TO CHARGE A 12 HOUR BATTERY IN A 8/10 HOUR CHARGER (BLACK).**